

# Channel District COMMUNITY REDEVELOPMENT AREA



## Current Development Highlights

November 2010

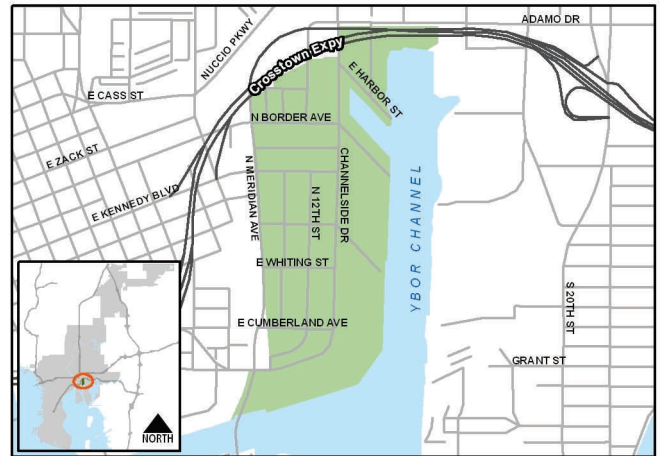
- The Tampa Port Authority recently completed a 720-car parking garage expansion.
- The construction of the York Street stormwater vault is completed.
- Construction of the district's first public park is scheduled for first quarter 2011.
- The Channel District CRA Neighborhood Amenity Incentive Program is successfully attracting new businesses to the area.
- Aggressive pricing has contributed to very strong sales at the Towers of Channelside and Slade.
- Grand Central at Kennedy, The Place and Seaport Channelside report residential occupancy levels of 95%.

### At-a-Glance From FY11 CRA Budget Book

CRA Created	2004	
CRA Area (Acres)	221	
TIF Established	2004	
TIF Base Year	2003	
Base Year Taxable Assessment	\$39,869,871	
Current Taxable Assessment	\$275,327,869	
Change From Base Year	\$235,457,998	
Change From Base Year (%)	591	
FY11 TIF Revenue (@95%)	\$2,608,906	
<b>Property Profile:</b>	<b>FY11 Tax Base</b>	<b>FY10 Tax Base</b>
• Homesteaded	\$10,084,376	\$14,355,951
• Non-Homesteaded	\$208,238,635	\$252,697,391
• Office/Retail	\$4,804,662	\$6,111,350
• Other Commercial	\$5,928,445	\$3,689,750
• Ind./Man.	\$30,896,451	\$48,370,946
• Vacant Land	\$15,375,300	\$27,623,208
• Municipal Parking Spaces <sup>1</sup>	2,720	
◊ Garage Spaces	2,720	

Notes: Parking facility is owned by the Tampa Port Authority, not by the City of Tampa. Assessment values and revenues may not reflect final millage rates for the fiscal year.

Sources: Hillsborough Co. Property Appraiser, CRA Manager and the City's Parking Division.



Bob McDonough, Manager  
306 E. Jackson Street, 2N, Tampa, Florida 33602  
Tel 813-274-8245 Fax 813-274-7410