

DREW PARK COMMUNITY REDEVELOPMENT AREA



Current Development Highlights

April 2010

- The Hillsborough County Aviation Authority's new Air Cargo Road is providing improved transportation access and safety through the area.
- Mission Critical Solutions is investing approximately \$800,000 to expand its facilities, and several other new office/warehouse facilities were recently completed in the area.
- The City recently completed over \$2 million in street resurfacing and sidewalk projects in the light industrial area.
- The City is utilizing a \$400,000 EPA Brownfield Assessment Grant targeting Drew Park and three other CRAs to conduct environmental assessments and create site redevelopment plans.
- Applications are being accepted for the Business Façade Improvement Grant Program. This matching grant is being offered to help improve the appearance of commercial buildings throughout the district.

At-a-Glance

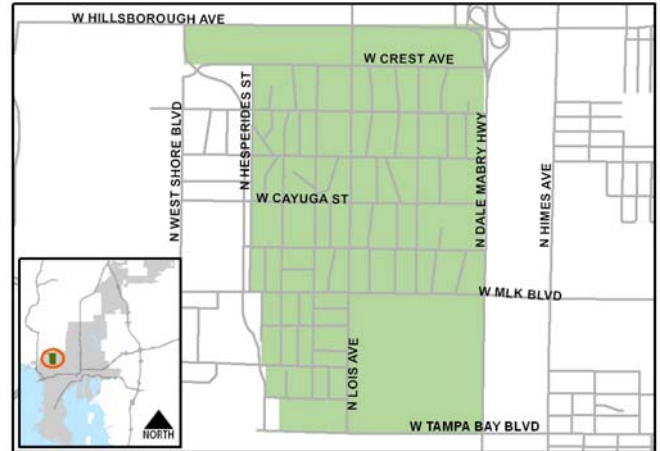
From FY10 CRA Budget Book

CRA Created	2004
CRA Area (Acres)	829
TIF Established	2004
TIF Base Year	2003
Base Year Taxable Assessment	\$168,033,380
Current Taxable Assessment	\$260,948,073
Change From Base Year	\$92,914,693
Change From Base Year (%)	55
FY10 TIF Revenue (@95%)	\$1,030,010

Property Profile:	<u>Counts</u>	<u>Values</u>	<u>Space (sf)</u>
• Residential	277	\$25565,188	493,108
◇ Homestead	107		
◇ Non-Homestead	170		
• Comm./Indust.	576	\$229,915,466	3,362,410
◇ Inst./Misc. (adjusted)	34	\$5,466,419	1,194,531
• Hotel Rooms	334		
• Meeting Space (sf)	19,856		
• Public Garage Spaces	0		

Source: Hillsborough County Property Appraiser. Hotel data from Tampa Bay and Company.
Meeting Space data from CRA Manager.

Note: Assessment values and revenues may not reflect final millage rates for the fiscal year.



Jeanette LaRussa Fenton, Manager
306 E. Jackson Street, 2N, Tampa, Florida 33602
Tel 813-274-7427 Fax 813-274-7410