

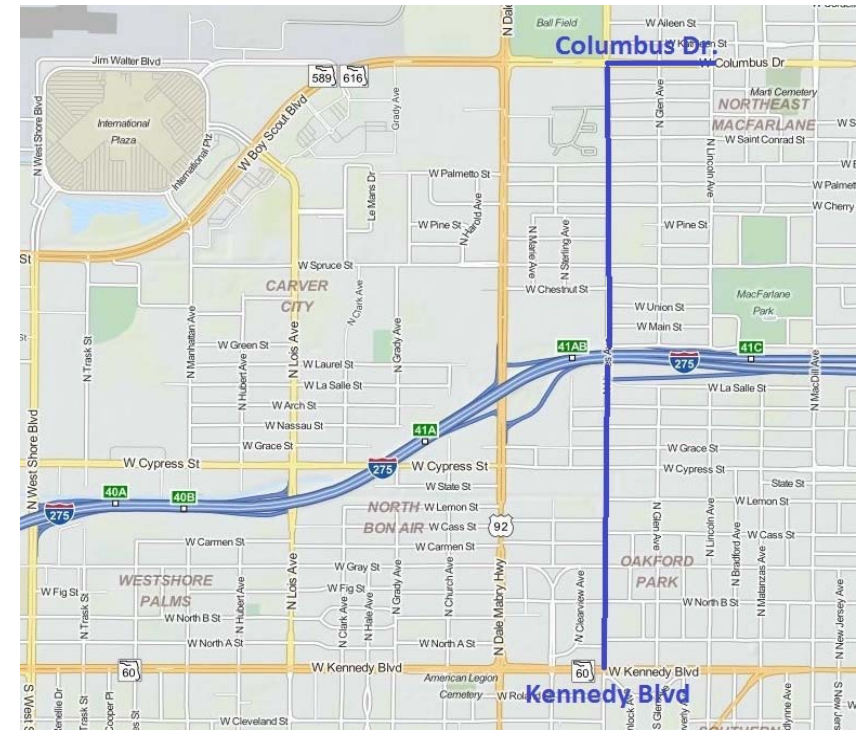
# Himes Avenue Safety Improvements

## Transportation and Stormwater Services Department



# Existing Conditions of Himes Avenue

- Five-lane collector roadway
  - Two travel lanes in each direction and a two-way left-turn lane
  - Posted speed of 40 mph
- 27,000 vehicles per day as well as heavy bike and pedestrian traffic
- Serves neighboring residential developments and commercial uses
- Truck Route from Cypress St. to Columbus Dr.
- Significant Crash History



# Crash Data (2009 – 2011)

- 86 total crashes
- 31 crashes at intersections
- 32 angle and left-turn crashes  
“T-bone”
- 1 pedestrian & 2 bike crashes
- 7 Incapacitating crashes

Table 1: Crash Attributes Himes Avenue

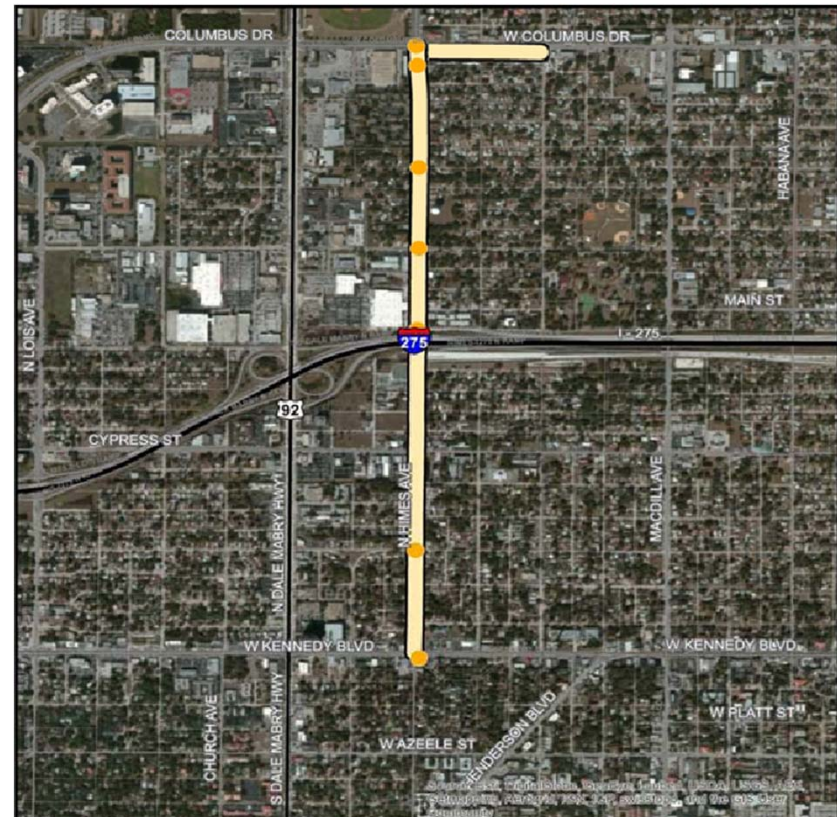
Himes Ave. Corridor from Kennedy Blvd. to Columbus Dr.	Intersection Crashes	Percent of Total
<b>All Crashes</b>	86	
Fatal	-	0%
Incapacitating	7	8%
Rear-End	31	36%
Angle	32	37%
Sideswipe	7	8%
Hit Fixed Object	5	6%
Head-On	6	7%
Ped	1	1%
Bike	2	2%
Night	33	38%
Wet	6	7%
At Intersection	31	36%

- **One of the top 3 severe/fatal clusters in Tampa**



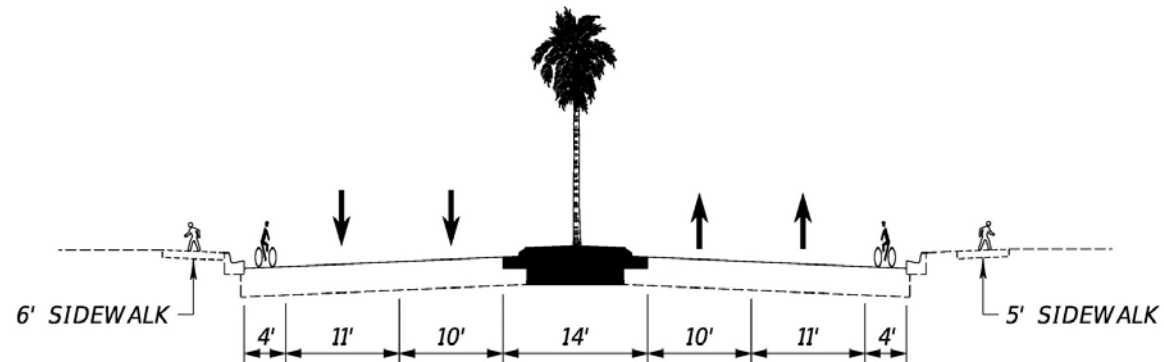
# Project Background

- The project was analyzed for countermeasures to improve safety and was approved for FDOT Highway Safety Improvement Program Off-System Funds in 2014.
- The project is in partnership with:
  - Florida Department of Transportation
  - Federal Highway Safety Funds
- One of 3 locations picked as priority:
  - 34<sup>th</sup> St. & Hyde Park/Plant

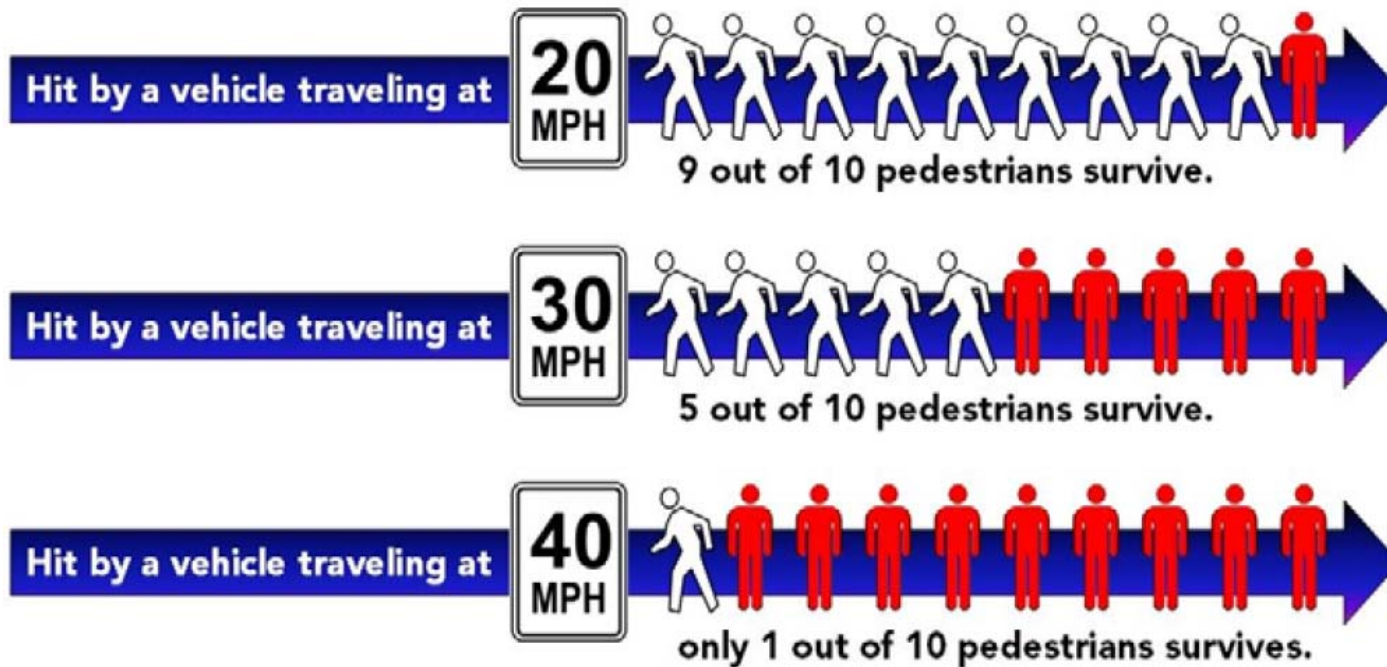


# Proposed Improvements

- Raised traffic separators and median islands
- Reduced Lane Width
- Bicycle Facilities
- RRFB Pedestrian crosswalks
- Speed Limit Reduction to 35 mph



# Reduced Speed and Pedestrians



# Public Involvement

- Provided concept plans at the public meeting held on May 13, 2014.
- Provided 60% plans at the public meeting held on October 26, 2016.

# General Concerns from the Meeting

Public Meeting held October 26<sup>th</sup>, 2016 at David Barksdale Senior Center.

Comments that were received from the public:

- Closing the median on Himes would cause more cut through traffic on Gray St.
- Access to Sons of Italy from Lemon St. would be restricted
- Access to businesses and side streets would be restricted
- Access to Horizon Place Townhomes would be restricted
- Request for Landscaping for the new median
- Request for Roundabout at Himes Ave. and Gray St.



# Gray to Street Cut-Through Traffic

- Added directional left turn counter measurements to restrict left turns from Gray St. onto Himes Ave.



60% Plans Presented at Public Meeting  
(10/26/2016)



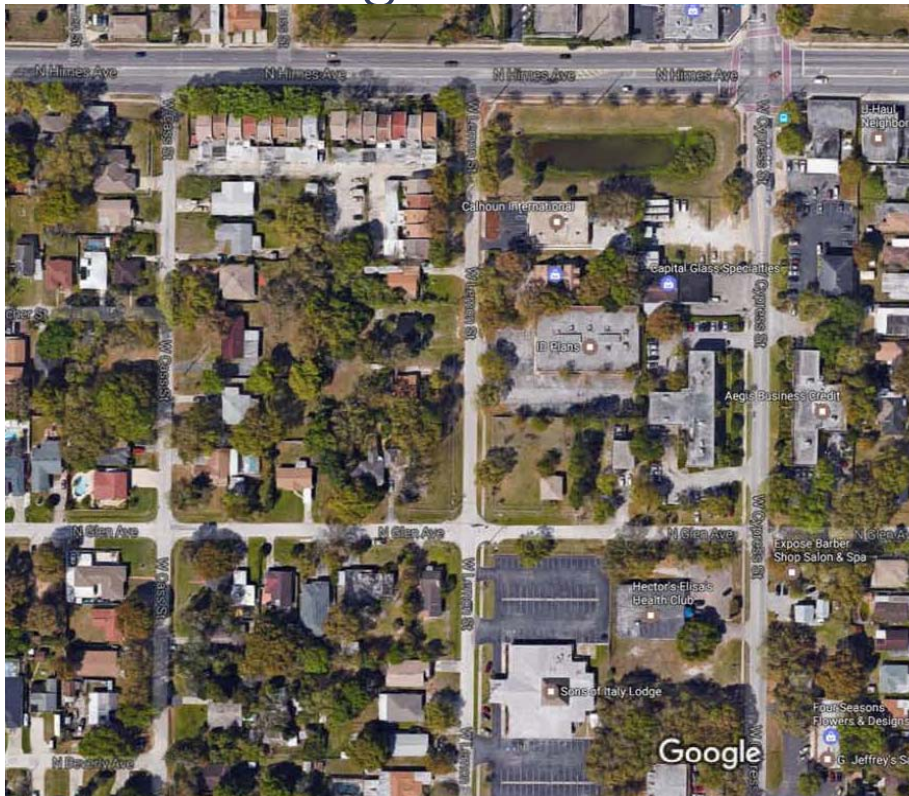
100% plans

# Gray to Street Cut-Through Traffic

- Additionally, the City has contracted with an engineering consultant, DKS Associates, to study the cut through traffic on Gray St. and Carmen St.
- They will be producing a traffic study with concepts to reduce and/or calm cut through traffic.
- They will also be looking at ways to reduce cut through traffic generated by the WaWa.

# Access to Sons of Italy

- Access to Sons of Italy can be made turning left at the signalized intersection at Cypress St.



# Access to Businesses

- Additional Left/U-Turn bays are added to provide access to the businesses.



60% Plans Presented at Public Meeting  
(10/26/2016)

100% plans



# Access to Horizon Place Townhome

- Added additional U-Turn bays to accommodate access to townhomes.



60% Plans Presented at Public Meeting  
(10/26/2016)



100% plans

# Landscaping and Roundabout

- The Transportation Division will be coordinating with Parks to identify landscaping needs and opportunities.
  - No federal funds for landscaping
- Due to the volumes of the intersection and the limited right-of-way, a roundabout was deemed infeasible.

# Project Schedule and Costs

	Schedule		Amount/Funding Sources
	Start	Finish	
Design	January 2016	Summer 2017	\$200,000 (FDOT)
Bid	Summer 2017	Winter 2017	
Construction (100% Estimate)	Winter 2017	Summer 2018	\$1.7M (FDOT & City)