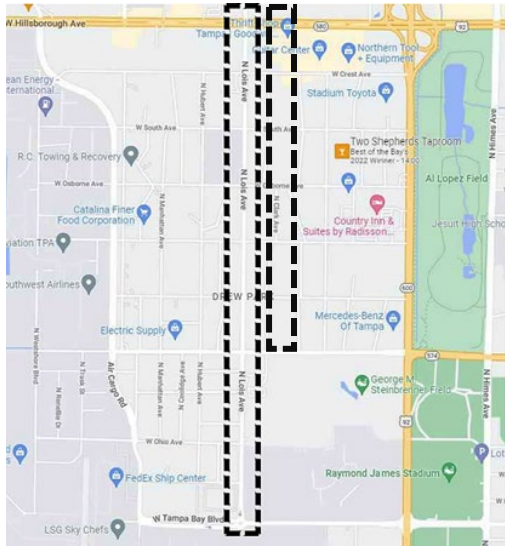


LANDSCAPE, STREETScape, AND SAFETY AUDIT IMPROVEMENT PROJECT

Lois Ave. and Grady Ave.



PROJECT DETAILS

CRA District: Drew Park

City Council District: 6

CRA Funding Amount: \$2,360,000

PROJECT DESCRIPTION

Research and data collected by contracted firm for Drew Park's tree inventory along Lois Ave and Grady Avenue. Recommendations for needed landscape modifications and new construction areas for irrigation, pavers and concrete developed for the Drew Park CRA.

PUBLIC BENEFIT

Community insight for infrastructure investments to improve local quality of life, and improvements to appearance highly visible major corridors for economic growth opportunity/appeal.

TAMPA CRA OBJECTIVES MET:

Tampa CRA's "Transportation" and "Quality of Life" improvement goals.

DREW PARK CRP:

CRP recommends improving the environment, air quality, and reducing pollution with shade trees and landscape. SAP strategy "Invest TIF in infrastructure to encourage increased community investment and improve the quality of life" and "Continue to improve the appearance and investment appeal of highly visible gateways & major corridors" objectives.

CONTACT INFORMATION

Cedric McCray, Development Manager

- **Email:** cedric.mccray@tampagov.net
- **Phone:** (813) 557-9586