



## FY 24 Stormwater Service Assessment Program Report

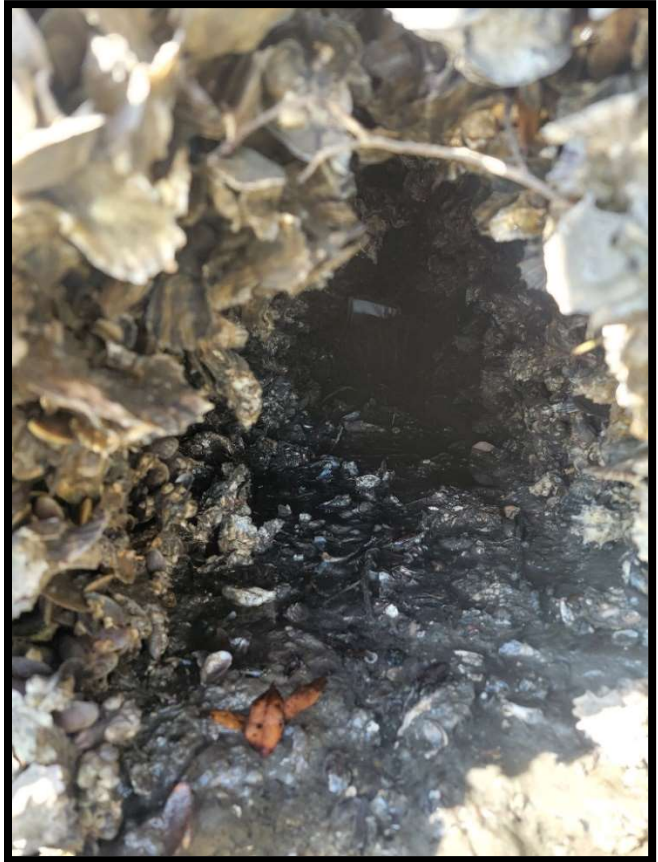
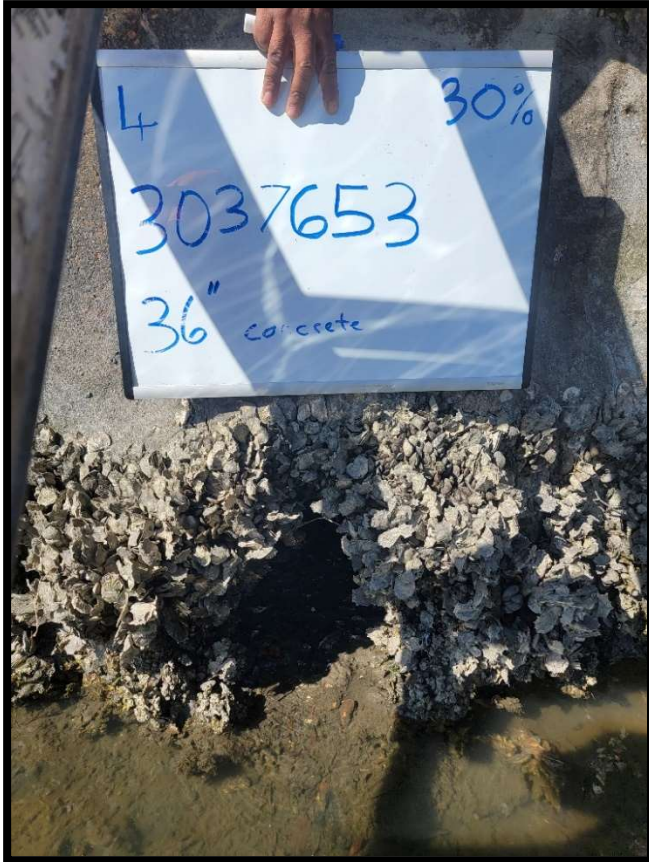
### Tampa City Council Update No. 30 - June 2024

Maintenance activities are reported based on service level frequency. Below is a list of the primary maintenance categories that are being tracked. Along with service level cycle times, we have also provided maintenance statistics for the quarter.

Operations and Maintenance Activities	Pre Fee Service Levels	Fee Target Service Levels	2 <sup>nd</sup> Quarter FY24 & Year-to-Date Service Levels
Ditches	10-Year Cycle	7-Year Cycle	18.6-Year Cycle (2 <sup>nd</sup> Qtr.) 9.9-Year Cycle (Y.T.D)
Ponds	Minimal	3-Year Cycle	3-Year Cycle (2 <sup>nd</sup> Qtr.) 3-Year Cycle (Y.T.D)
Pipes	10-Year Cycle	7-Year Cycle	2.0-Year Cycle (2 <sup>nd</sup> Qtr.) 2.3-Year Cycle (Y.T.D)
Outfalls	15-Year Cycle	5-Year Cycle	0.5-Year Cycle (2 <sup>nd</sup> Qtr.) 0.7-Year Cycle (Y.T.D)
Pumps	Low Preventative Maintenance	Annual Preventative Maintenance	1-Year Cycle
Street Sweeping	90-Day Cycle	60-Day Cycle	40-Day Cycle (2 <sup>nd</sup> Qtr.) 44-Day Cycle (Y.T.D)
Operations and Maintenance Activities	2 <sup>nd</sup> Quarter Maintenance Statistics		
Ditches	13,375 linear feet of ditches maintained with 1,383 tons removed, 113 fallen trees removed, 441,765 linear feet of ditch mowed monthly with 16 tons of trash removed.		
Ponds	7.4 tons of trash and illegal dumping have been disposed of, there have been 116 herbicide treatments to various ponds, 126 stormwater ponds mowed monthly.		
Pipes	343,774 linear feet of storm drainage pipe inspected and maintained, 4,031 storm drain inlets and manholes inspected and maintained with 337 tons of debris removed. 10 cave-ins and 34 inlet tops repaired.		
Outfalls	428 outfalls were inspected and maintained.		
Pumps	Preventative Maintenance provided to all thirteen (13) stormwater pump stations.		
Street Sweeping	6,575 curb miles were swept, approximately 1,434 tons of debris removed.		

Activity Type	2 <sup>nd</sup> Quarter Department Activities Relating to Findings Pertaining to Ditches/Swales
Micro Projects	There is no new activity for project development to remedy historic activity.
Maintenance Activities	There are no locations that are currently being reviewed by Operations staff.

# Palmetto Beach Outfall Cleaning



Before



After

**Inlet Top Repair – 3502 W. Vasconia St.**



**Before**



**After**

**Inlet Top Repair Bayshore Blvd. @ W. Verne St.**



**Before**



**After**

**Rainbow Heights Inlet Top Cleaning**

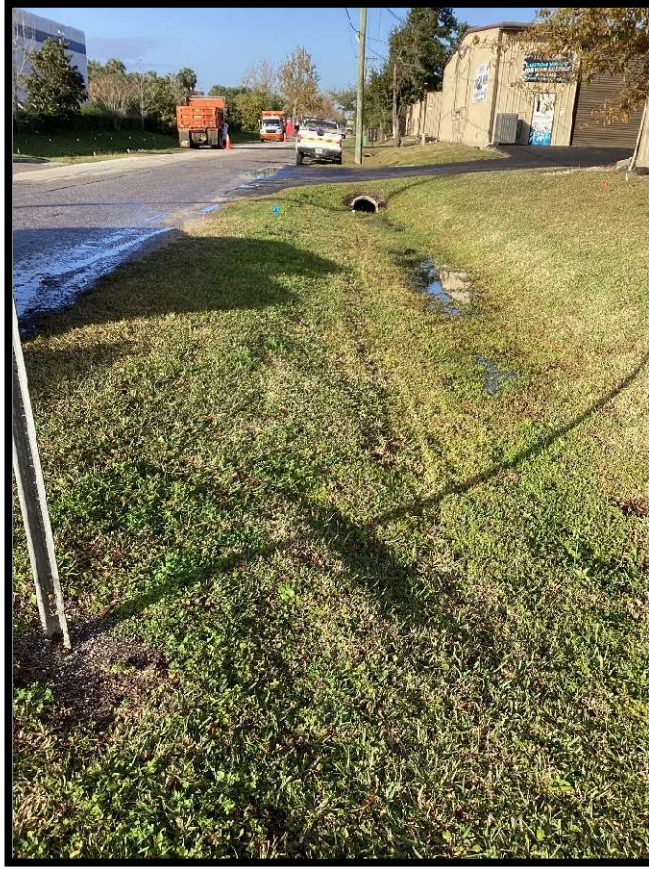


**Before**



**After**

### E. Acline Dr. Ditch Grading



**Before**



**After**